

# CVC CAPE VILLA COLLECTION

## Esprit – Constantia Hills, Cape Town

|           |   |       |              |
|-----------|---|-------|--------------|
| Sleeps    | 6 | Pool  | Private pool |
| Bedrooms  | 3 | Views | Mountain     |
| Bathrooms | 3 | Beach | ± 16km       |

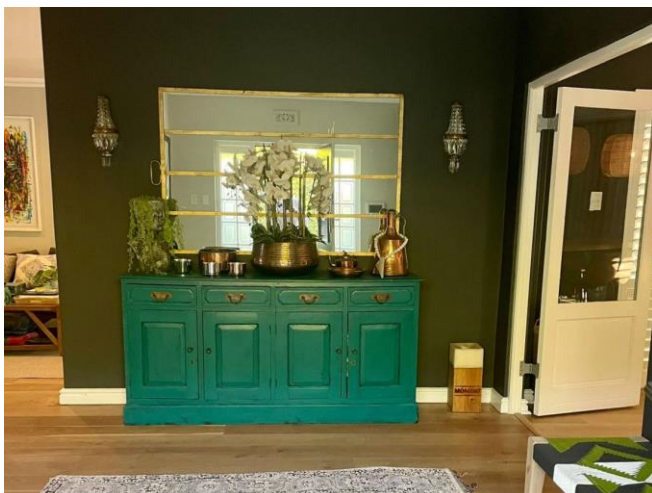
### Summary

Beautiful family home situated in the leafy and quiet suburb of Constantia Hills surrounded by mountains and within close proximity to the Constantia Winelands and Hout Bay and False Bay beaches. Enjoy a relaxed holiday environment in a charming space.



### Living

This comfortable home offers open plan easy flowing living spaces. Two lounges with TV's, both leading to the outdoor entertainment area and pool. The country style dining table seats 10 and compliments the fully equipped gourmet kitchen.



# CVC CAPE VILLA COLLECTION



# CVC CAPE VILLA COLLECTION



## Leisure

The large garden with swimming pool and lawn is ideal for children. The covered patio offers an informal outdoor lounge and dining seating for 8 people along with sun loungers around the private swimming pool. There is a gas and weber braai for cooking outdoors.



## Bedrooms & Bathrooms

|            |  |
|------------|--|
| Bedroom 1  | Master bedroom. King size bed. Doors opening out onto pool area. Dressing room. TV. En-suite bathroom. |
| Bedroom 2  | Queen size bed. En-suite bathroom. Wardrobe.   |
| Bedroom 3  | Queen size bed. Built in cupboards.  |
| Bathroom 1 | En-suite to master bedroom with bath, shower, basin toilet.  |
| Bathroom 2 | En-suite to second bedroom with bath, shower, basin, toilet.   |
| Bathroom 3 | Family bathroom with shower, basin, toilet.  |





**Features and Facilities**

|                     |   |
|---------------------|---|
| Kitchen/Catering:   | <ul style="list-style-type: none"> <li>• Gas hob-electric oven</li> <li>• Fridge-Freezer</li> <li>• Microwave Oven</li> <li>• Kettle</li> <li>• Toaster</li> <li>• Coffee maker</li> <li>• Dishwasher</li> <li>• Separate scullery</li> </ul> |
| Laundry Facilities: | <ul style="list-style-type: none"> <li>• Washing machine</li> <li>• Tumble drier</li> <li>• Ironing board and Iron</li> </ul>   |
| Indoor:             | <ul style="list-style-type: none"> <li>• Dining seating for 8 guests</li> <li>• Additional dining table in kitchen</li> <li>• Fireplace</li> <li>• Bed Linen</li> <li>• Towels</li> </ul>   |
| Media:              | <ul style="list-style-type: none"> <li>• TV</li> <li>• Wi-Fi internet</li> </ul>  |
| Outdoor:            | <ul style="list-style-type: none"> <li>• Swimming pool</li> <li>• Sun loungers</li> <li>• Outdoor seating</li> <li>• Outdoor dining</li> <li>• Beach Towels</li> <li>• BBQ Facilities (Weber / Gas braai)</li> </ul>                          |
| Safety remarks:     | <ul style="list-style-type: none"> <li>• Swimming pool with no pool safety feature</li> </ul>   |
| Parking:            | <ul style="list-style-type: none"> <li>• Off-street parking behind automated gate</li> </ul>  |
| Security:           | <ul style="list-style-type: none"> <li>• Fully enclosed property</li> <li>• Alarm</li> <li>• External Beams</li> <li>• Connected to armed response</li> </ul>   |

# CVC CAPE VILLA COLLECTION



## Servicing

|                |  |
|----------------|--|
| House Keeping: | <ul style="list-style-type: none"> <li>• 3 times per week</li> <li>• excludes weekends and public holidays</li> <li>• additional servicing at additional cost (by prior arrangement)</li> <li>• excludes personal laundry</li> <li>• linen change once per week</li> </ul> |
|----------------|--|

## Reservations

|                       |  |
|-----------------------|--|
| Rates & Availability: | • are subject to final confirmation              |
| Lease:                | • a standard rental agreement applies            |
| Booking Deposit:      | • a 50% deposit is required to confirm a booking |
| Booking Fee:          | • applies – on booking confirmation invoice      |
| Breakage Deposit:     | • applies – due prior to arrival                 |



# CVC CAPE VILLA COLLECTION

## GPS Co-ordinates

34° 2'40.42"S  
18°25'59.56"E

