

House Dickson– Hout Bay, Cape Town

Sleeps	11	Pool	Private pool
Bedrooms	4 + 2	Views	Mountain
Bathrooms	4	Beach	± 3 km



Summary

An expansive, contemporary home with a separate two bedroom cottage in the private wooded estate of Leeukop in Hout Bay. Surrounded by lush greenery and tranquility provides the perfect setting for rest and recuperation.



Living

The main house is luxuriously furnished with concertina doors which allow natural light to flood into the home. Attention to detail and exquisite pieces throughout create an aesthetically pleasing and inviting interior.





Leisure

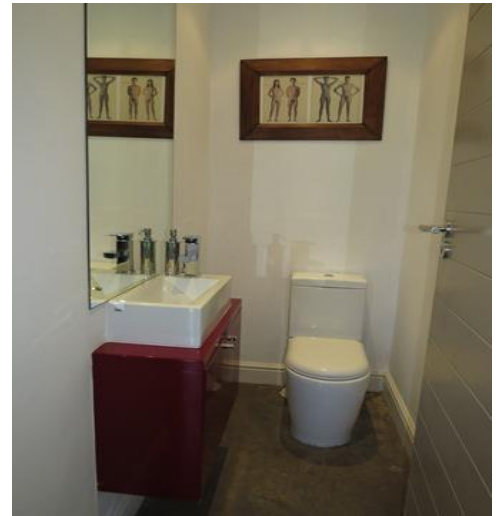
The secluded garden surrounded by lush greenery is tranquil and quiet. Outdoor entertainment areas and the pergola aside the pool provide ample opportunity to while away the hours amidst the natural beauty.



Bedrooms & Bathrooms

Main House:	King size bed with en-suite bathroom. Doors leading to the garden and pool.
Bedroom 1	King size bed with en-suite bathroom. Doors leading to the garden and pool.
Bedroom 2	Double bed with a door leading to the garden. Shared bathroom.
Bedroom 3	Single bed with shared bathroom.
Bedroom 4	Studio with double bed, en-suite bathroom, sofa and kitchenette.
Cottage:	
Bedroom 5	2 Single beds with shared bathroom.
Bedroom 6	Double bed with shared bathroom.
Bathroom 1	En suite to Bedroom 1 (main house) bath, shower, toilet, basin and heated towel rail.
Bathroom 2	Shared with Bedroom 2 and 3 (main house) bath, shower, toilet, basin and heated towel rail
Bathroom 3	Studio bathroom with shower, basin and toilet.
Cottage:	
Bathroom 4	Bath, shower, toilet, basin and heated towel rail.





Garden Cottage:





Features and Facilities

<p>Kitchen/Catering: Gas hob-electric oven / Fridge-Freezer / Microwave Oven / Kettle / Toaster / Dishwasher / Separate scullery /</p>	<p>Laundry Facilities: Washing machine / Tumble drier / Ironing board and Iron / Clothes line</p>
<p>Indoor: Dining seating 8 guests / Fireplace / Bed Linen / Towels</p>	<p>Media: TV / DStv (satellite channels) / Dual viewing / Music system / Wi-Fi (uncapped)</p>
<p>Outdoor: Swimming pool 4.5 m x 3m / Sun loungers / Outdoor seating / Outdoor dining / Pergola / Beach Towels / BBQ Facilities / Weber</p>	<p>Children: Jungle Gym / No swimming pool safety feature</p>

Additional Info

Breakage deposit	Applicable – per booking confirmation.
Parking	Double Garage and off street parking
Security	Armed response and security in the estate
Meals	No meals included. Self-catering only.



Servicing

Weekdays	Cleaning service 4 times per week inclusive in the rate (Monday, Tuesday, Thursday and Friday)
Public holidays & weekends	Available on request at additional cost
Extra cleaning	Available on request at additional cost
Laundry	Personal laundry is not included
Pool and garden	Serviced once per week

Reservations

Rates and availability are subject to final confirmation.

A standard rental agreement applies.

A 50% deposit is required to confirm a booking.

A booking fee applies.



GPS Co-ordinates

34° 1'34.99"S

18°20'50.49"E

